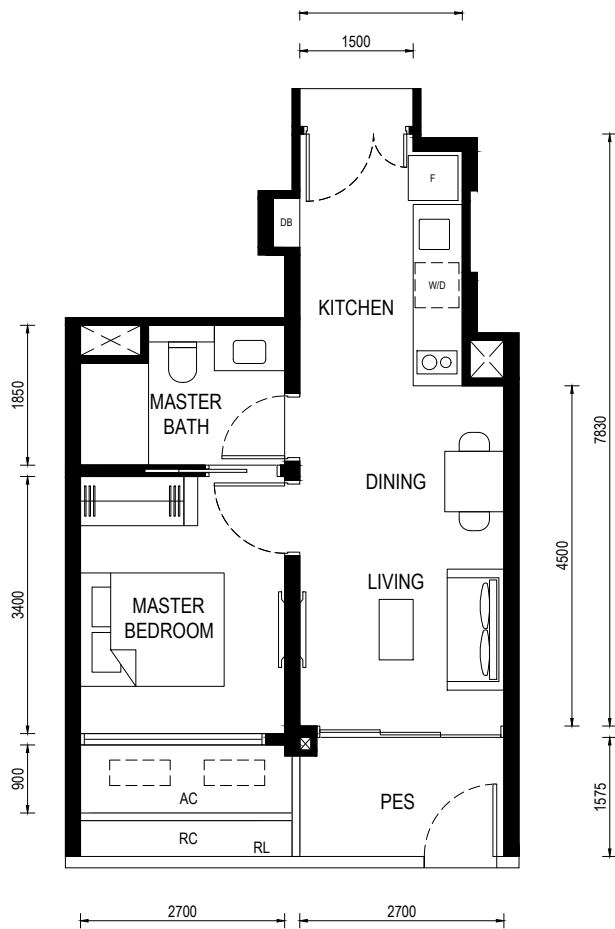


**LENTOR CENTRAL RESIDENCES**  
Floor Plan

Type (1)a1

Unit: #01-11

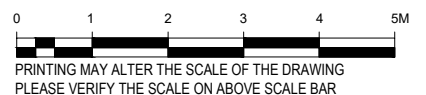
BP No.:  
A1716-00022-2023-BP01 approved on 13 OCT 2024



**LEGEND:**

- F - FRIDGE
- DB - DISTRIBUTION BOARD
- WD - WASHER CUM DRYER
- AC - AIRCON LEDGE (NON-STRATA AREA)
- RC - REINFORCED CONCRETE LEDGE (NON-STRATA AREA)
- RL - RAILING (NON STRATA AREA)
- PES - PRIVATE ENCLOSED SPACE

- AIRCON CONDENSER
- SERVICES VOID SPACE (NON-STRATA AREA)
- RAINWATER DOWNPIPE SHAFT SPACE (NON-STRATA AREA)
- WALL NOT ALLOWED TO BE HACKED OR ALTERED (INCLUDING BY WAY OF DRILLING)  
WALL THICKNESS IS 100MM-200MM (EXCLUDED FINISHES)
- NON - STRUCTURAL WALL

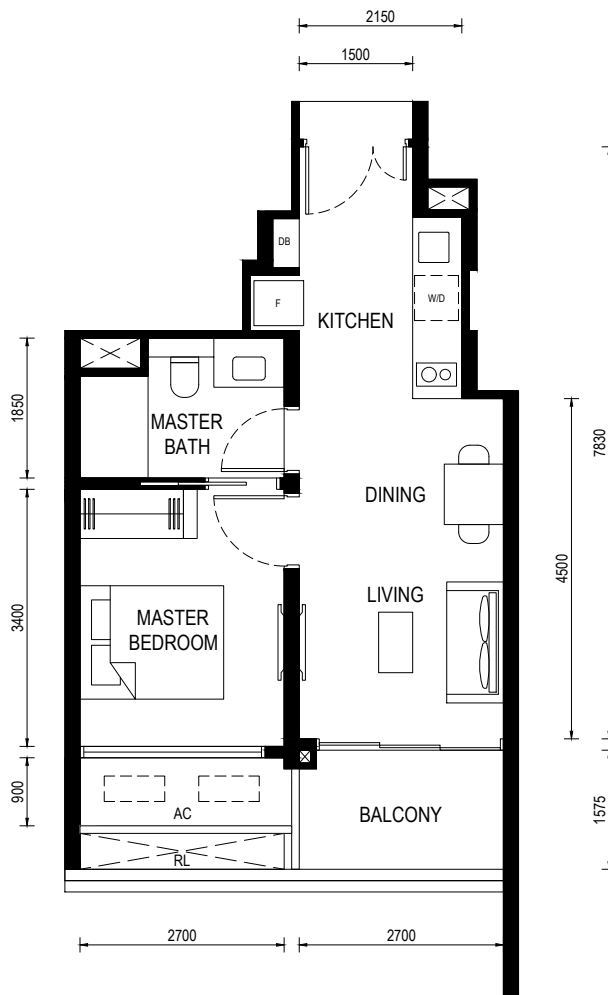


**LENTOR CENTRAL RESIDENCES**  
Floor Plan

Type (1)b

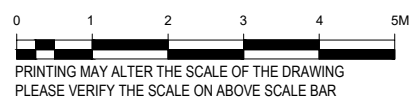
Unit: #02-06 to #13-06  
#15-06 to #28-06

BP No.:  
A1716-00022-2023-BP01 approved on 13 OCT 2024



- LEGEND:**
- F - FRIDGE
  - DB - DISTRIBUTION BOARD
  - W/D - WASHER CUM DRYER
  - AC - AIRCON LEDGE (NON-STRATA AREA)
  - RL - RAILING (NON STRATA AREA)

- AIRCON CONDENSER
- SERVICES VOID SPACE (NON-STRATA AREA)
- RAINWATER DOWNPIPE SHAFT SPACE (NON-STRATA AREA)
- WALL NOT ALLOWED TO BE HACKED OR ALTERED (INCLUDING BY WAY OF DRILLING)  
WALL THICKNESS IS 100MM-200MM (EXCLUDED FINISHES)
- NON - STRUCTURAL WALL

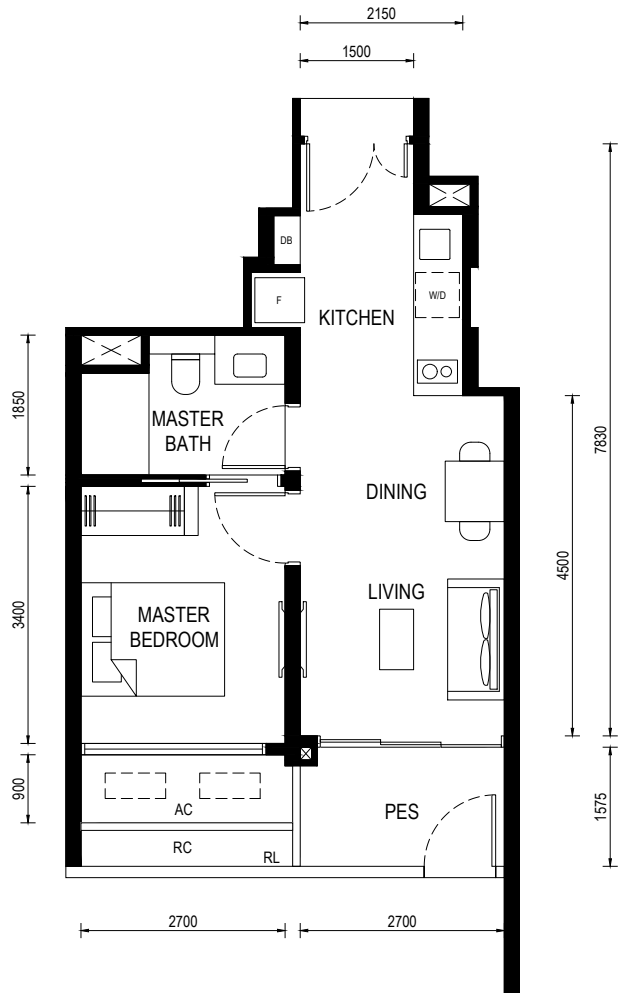


**LENTOR CENTRAL RESIDENCES**  
Floor Plan

Type (1)b1

Unit: #01-06

BP No.:  
A1716-00022-2023-BP01 approved on 13 OCT 2024



**LEGEND:**

- F - FRIDGE
- DB - DISTRIBUTION BOARD
- W/D - WASHER CUM DRYER
- AC - AIRCON LEDGE (NON-STRATA AREA)
- RC - REINFORCED CONCRETE LEDGE (NON-STRATA AREA)
- RL - RAILING (NON STRATA AREA)
- PES - PRIVATE ENCLOSED SPACE

- AIRCON CONDENSER
- SERVICES VOID SPACE (NON-STRATA AREA)
- RAINWATER DOWNPIPE SHAFT SPACE (NON-STRATA AREA)
- WALL NOT ALLOWED TO BE HACKED OR ALTERED (INCLUDING BY WAY OF DRILLING)  
WALL THICKNESS IS 100MM-200MM (EXCLUDED FINISHES)
- NON - STRUCTURAL WALL



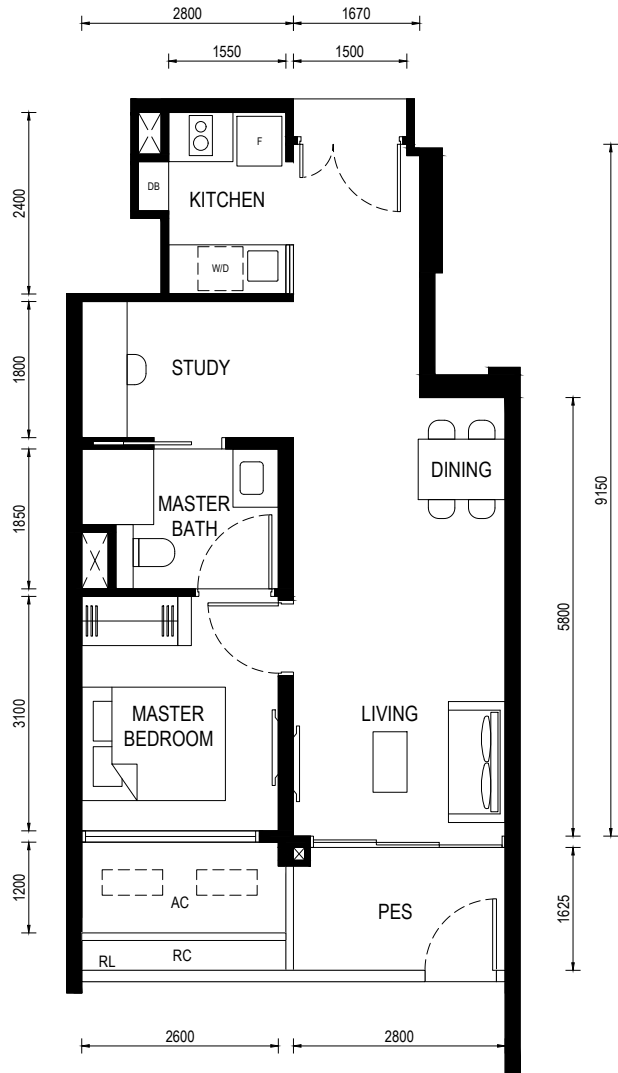
PRINTING MAY ALTER THE SCALE OF THE DRAWING  
PLEASE VERIFY THE SCALE ON ABOVE SCALE BAR

**LENTOR CENTRAL RESIDENCES**  
Floor Plan

Type (1)c1

Unit: #01-05

BP No.:  
A1716-00022-2023-BP01 approved on 13 OCT 2024



**LEGEND:**

- F - FRIDGE
- DB - DISTRIBUTION BOARD
- WD - WASHER CUM DRYER
- AC - AIRCON LEDGE (NON-STRATA AREA)
- RC - REINFORCED CONCRETE LEDGE (NON-STRATA AREA)
- RL - RAILING (NON STRATA AREA)
- PES - PRIVATE ENCLOSED SPACE
- AIRCON CONDENSER
- SERVICES VOID SPACE (NON-STRATA AREA)
- RAINWATER DOWNPIPE SHAFT SPACE (NON-STRATA AREA)
- WALL NOT ALLOWED TO BE HACKED OR ALTERED (INCLUDING BY WAY OF DRILLING)  
WALL THICKNESS IS 100MM-200MM (EXCLUDED FINISHES)
- NON - STRUCTURAL WALL



PRINTING MAY ALTER THE SCALE OF THE DRAWING  
PLEASE VERIFY THE SCALE ON ABOVE SCALE BAR

**LENTOR CENTRAL RESIDENCES**  
Floor Plan

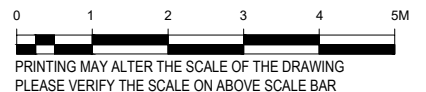
Type (1)c1

Unit: #01-14

BP No.:  
A1716-00022-2023-BP01 approved on 13 OCT 2024



- LEGEND:**
- F - FRIDGE
  - DB - DISTRIBUTION BOARD
  - W/D - WASHER CUM DRYER
  - AC - AIRCON LEDGE (NON-STRATA AREA)
  - RC - REINFORCED CONCRETE LEDGE (NON-STRATA AREA)
  - RL - RAILING (NON STRATA AREA)
  - PES - PRIVATE ENCLOSED SPACE
  - AIRCON CONDENSER
  - SERVICES VOID SPACE (NON-STRATA AREA)
  - RAINWATER DOWNPIPE SHAFT SPACE (NON-STRATA AREA)
  - WALL NOT ALLOWED TO BE HACKED OR ALTERED (INCLUDING BY WAY OF DRILLING)  
WALL THICKNESS IS 100MM-200MM (EXCLUDED FINISHES)
  - NON - STRUCTURAL WALL



**LENTOR CENTRAL RESIDENCES**  
Floor Plan

Type (2)a

Unit: #02-10 to #13-10  
#15-10 to #27-10

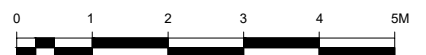
BP No.:  
A1716-00022-2023-BP01 approved on 13 OCT 2024



**LEGEND:**

- F - FRIDGE
- DB - DISTRIBUTION BOARD
- W/D - WASHER CUM DRYER
- AC - AIRCON LEDGE (NON-STRATA AREA)
- RC - REINFORCED CONCRETE LEDGE (NON-STRATA AREA)
- RL - RAILING (NON STRATA AREA)

- AIRCON CONDENSER
- SERVICES VOID SPACE (NON-STRATA AREA)
- RAINWATER DOWNPIPE SHAFT SPACE (NON-STRATA AREA)
- WALL NOT ALLOWED TO BE HACKED OR ALTERED (INCLUDING BY WAY OF DRILLING)  
WALL THICKNESS IS 100MM-200MM (EXCLUDED FINISHES)
- NON - STRUCTURAL WALL



PRINTING MAY ALTER THE SCALE OF THE DRAWING  
PLEASE VERIFY THE SCALE ON ABOVE SCALE BAR

**LENTOR CENTRAL RESIDENCES**  
Floor Plan

Type (2)a1

Unit: #01-10

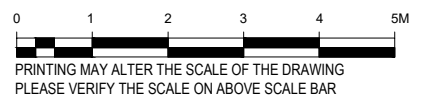
BP No.:  
A1716-00022-2023-BP01 approved on 13 OCT 2024



**LEGEND:**

- F - FRIDGE
- DB - DISTRIBUTION BOARD
- WD - WASHER CUM DRYER
- AC - AIRCON LEDGE (NON-STRATA AREA)
- RC - REINFORCED CONCRETE LEDGE (NON-STRATA AREA)
- RL - RAILING (NON STRATA AREA)
- PES - PRIVATE ENCLOSED SPACE

- AIRCON CONDENSER
- SERVICES VOID SPACE (NON-STRATA AREA)
- RAINWATER DOWNPIPE SHAFT SPACE (NON-STRATA AREA)
- WALL NOT ALLOWED TO BE HACKED OR ALTERED (INCLUDING BY WAY OF DRILLING)  
WALL THICKNESS IS 100MM-200MM (EXCLUDED FINISHES)
- NON - STRUCTURAL WALL

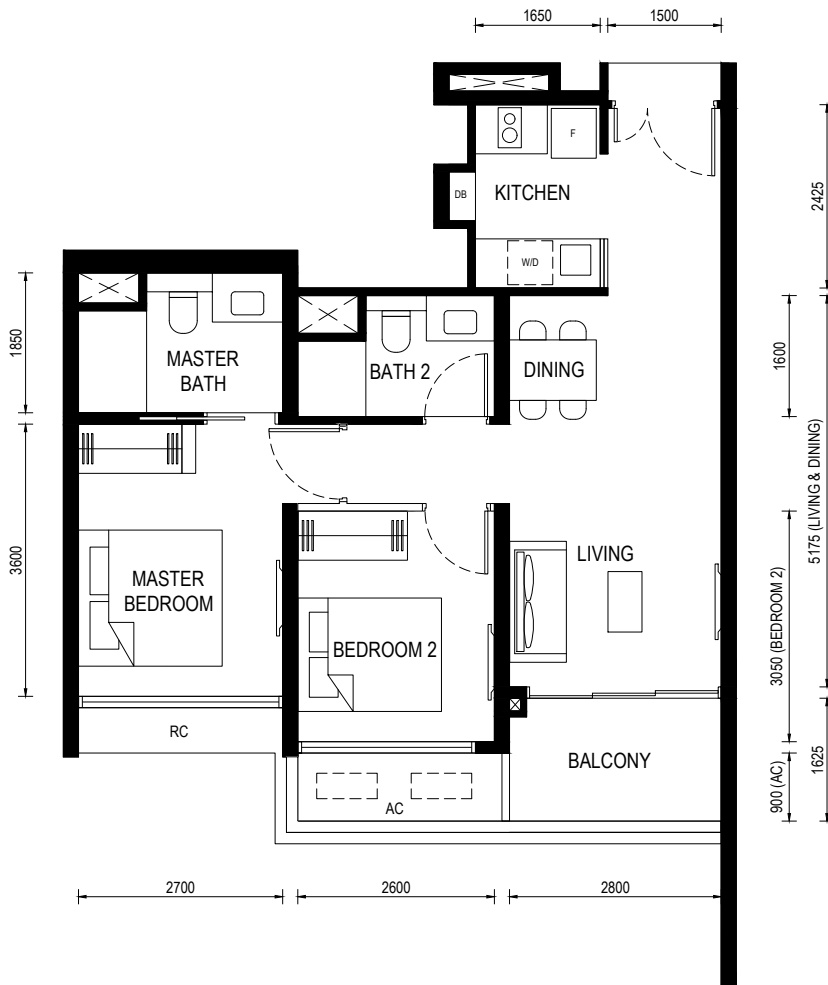


**LENTOR CENTRAL RESIDENCES**  
Floor Plan

Type (2)b

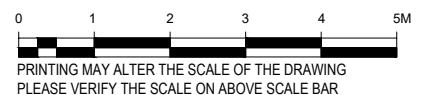
Unit: #02-18 to #13-18  
#15-18 to #27-18

BP No.:  
A1716-00022-2023-BP01 approved on 13 OCT 2024



- LEGEND:**
- F - FRIDGE
  - DB - DISTRIBUTION BOARD
  - W/D - WASHER CUM DRYER
  - AC - AIRCON LEDGE (NON-STRATA AREA)
  - RC - REINFORCED CONCRETE LEDGE (NON-STRATA AREA)

- AIRCON CONDENSER
- SERVICES VOID SPACE (NON-STRATA AREA)
- RAINWATER DOWNPIPE SHAFT SPACE (NON-STRATA AREA)
- WALL NOT ALLOWED TO BE HACKED OR ALTERED (INCLUDING BY WAY OF DRILLING)  
WALL THICKNESS IS 100MM-200MM (EXCLUDED FINISHES)
- NON - STRUCTURAL WALL



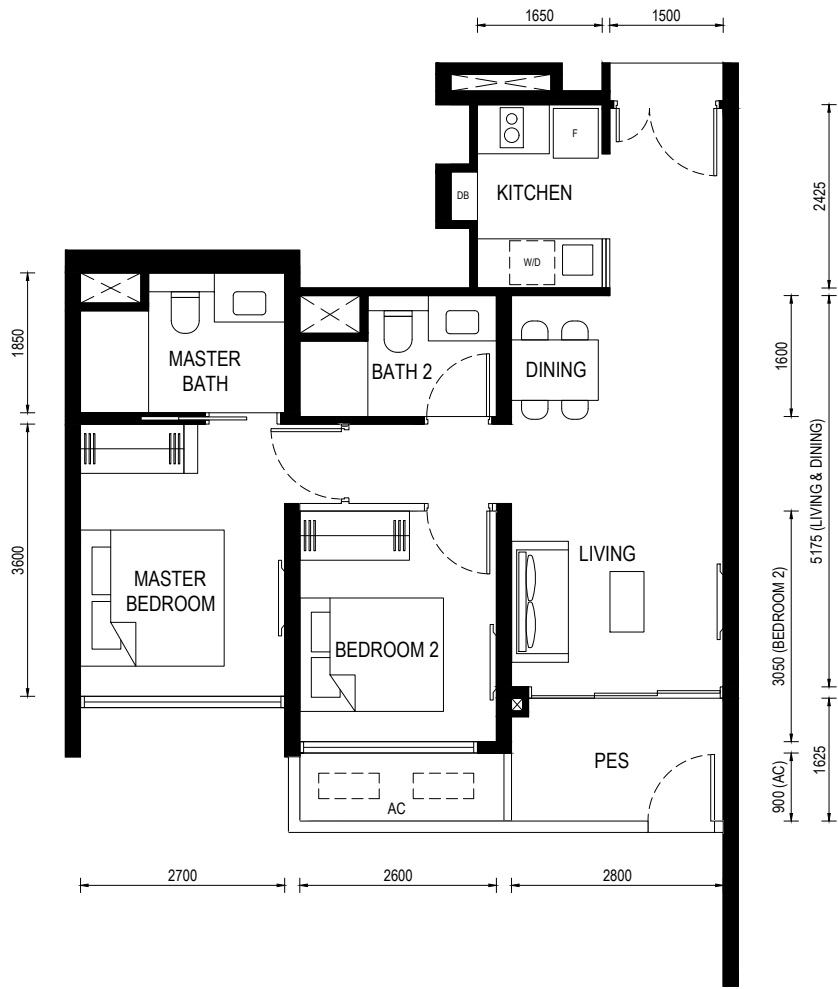


**LENTOR CENTRAL RESIDENCES**  
Floor Plan

Type (2)b1

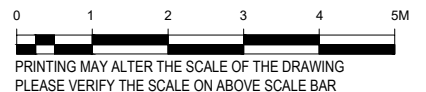
Unit: #01-18

BP No.:  
A1716-00022-2023-BP01 approved on 13 OCT 2024



- LEGEND:**
- F - FRIDGE
  - DB - DISTRIBUTION BOARD
  - W/D - WASHER CUM DRYER
  - AC - AIRCON LEDGE (NON-STRATA AREA)
  - RC - REINFORCED CONCRETE LEDGE (NON-STRATA AREA)
  - PES - PRIVATE ENCLOSED SPACE

- AIRCON CONDENSER
- SERVICES VOID SPACE (NON-STRATA AREA)
- RAINWATER DOWNPIPE SHAFT SPACE (NON-STRATA AREA)
- WALL NOT ALLOWED TO BE HACKED OR ALTERED (INCLUDING BY WAY OF DRILLING)  
WALL THICKNESS IS 100MM-200MM (EXCLUDED FINISHES)
- NON - STRUCTURAL WALL



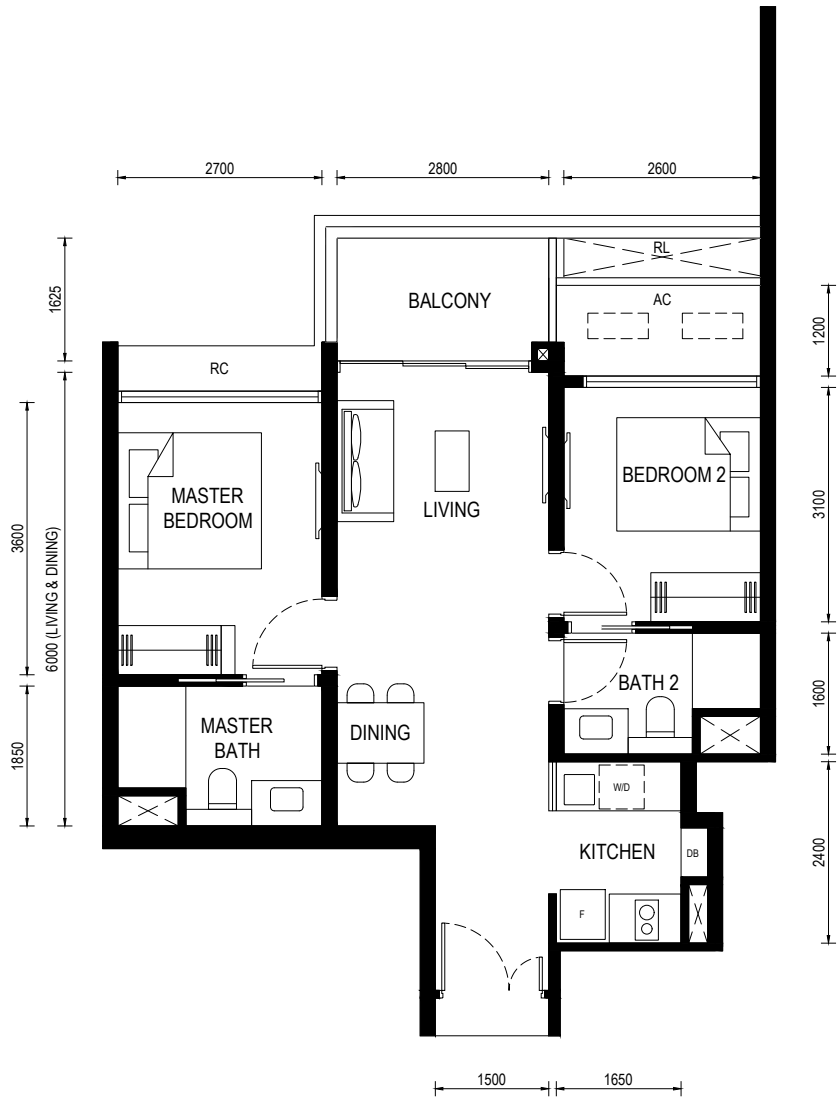
PRINTING MAY ALTER THE SCALE OF THE DRAWING  
PLEASE VERIFY THE SCALE ON ABOVE SCALE BAR

**LENTOR CENTRAL RESIDENCES**  
Floor Plan

Type (2)c

Unit: #02-01 to #13-01  
#15-01 to #28-01

BP No.:  
A1716-00022-2023-BP01 approved on 13 OCT 2024



**LEGEND:**

- F - FRIDGE
- DB - DISTRIBUTION BOARD
- WD - WASHER CUM DRYER
- AC - AIRCON LEDGE (NON-STRATA AREA)
- RC - REINFORCED CONCRETE LEDGE (NON-STRATA AREA)
- RL - RAILING (NON STRATA AREA)

- AIRCON CONDENSER
- SERVICES VOID SPACE (NON-STRATA AREA)
- RAINWATER DOWNPIPE SHAFT SPACE (NON-STRATA AREA)
- WALL NOT ALLOWED TO BE HACKED OR ALTERED (INCLUDING BY WAY OF DRILLING)  
WALL THICKNESS IS 100MM-200MM (EXCLUDED FINISHES)
- NON - STRUCTURAL WALL



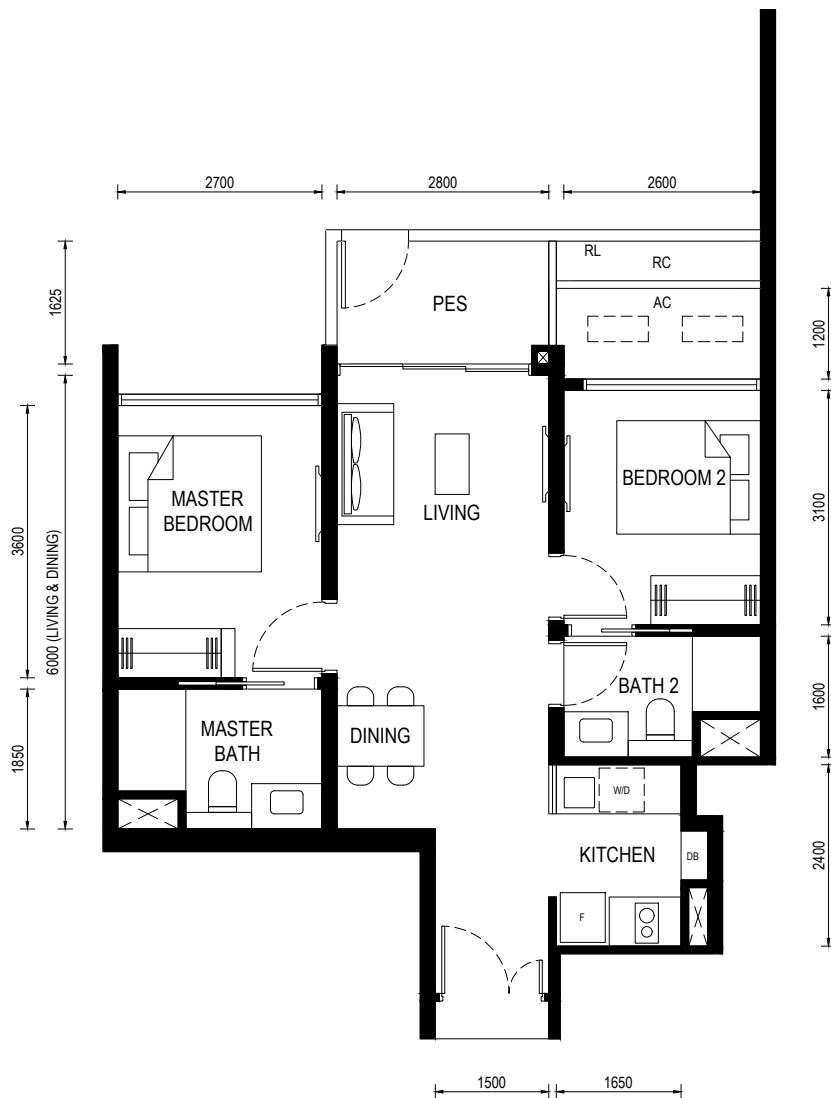
PRINTING MAY ALTER THE SCALE OF THE DRAWING  
PLEASE VERIFY THE SCALE ON ABOVE SCALE BAR

**LENTOR CENTRAL RESIDENCES**  
Floor Plan

Type (2)c1

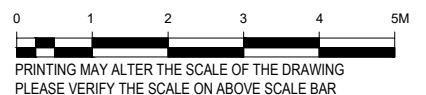
Unit: #01-01

BP No.:  
A1716-00022-2023-BP01 approved on 13 OCT 2024



- LEGEND:**
- F - FRIDGE
  - DB - DISTRIBUTION BOARD
  - W/D - WASHER CUM DRYER
  - AC - AIRCON LEDGE (NON-STRATA AREA)
  - RC - REINFORCED CONCRETE LEDGE (NON-STRATA AREA)
  - RL - RAILING (NON STRATA AREA)
  - PES - PRIVATE ENCLOSED SPACE

- ⊠ AIRCON CONDENSER
- ⊞ SERVICES VOID SPACE (NON-STRATA AREA)
- ⊛ RAINWATER DOWNPIPE SHAFT SPACE (NON-STRATA AREA)
- WALL NOT ALLOWED TO BE HACKED OR ALTERED (INCLUDING BY WAY OF DRILLING)  
WALL THICKNESS IS 100MM-200MM (EXCLUDED FINISHES)
- NON - STRUCTURAL WALL



**LENTOR CENTRAL RESIDENCES**  
Floor Plan

Type (2)d

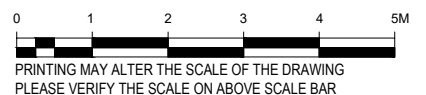
Unit: #02-14

BP No.:  
A1716-00022-2023-BP01 approved on 13 OCT 2024



- LEGEND:**
- F - FRIDGE
  - DB - DISTRIBUTION BOARD
  - WD - WASHER CUM DRYER
  - AC - AIRCON LEDGE (NON-STRATA AREA)
  - RC - REINFORCED CONCRETE LEDGE (NON-STRATA AREA)
  - RL - RAILING (NON STRATA AREA)

- AIRCON CONDENSER
- SERVICES VOID SPACE (NON-STRATA AREA)
- RAINWATER DOWNPIPE SHAFT SPACE (NON-STRATA AREA)
- WALL NOT ALLOWED TO BE HACKED OR ALTERED (INCLUDING BY WAY OF DRILLING)  
WALL THICKNESS IS 100MM-200MM (EXCLUDED FINISHES)
- NON - STRUCTURAL WALL



**LENTOR CENTRAL RESIDENCES**  
Floor Plan

Type (2)d

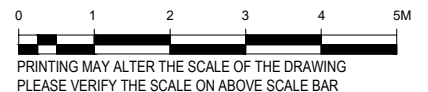
Unit: #03-14 to #13-14  
#15-14 to #27-14

BP No.:  
A1716-00022-2023-BP01 approved on 13 OCT 2024



- LEGEND:**
- F - FRIDGE
  - DB - DISTRIBUTION BOARD
  - WD - WASHER CUM DRYER
  - AC - AIRCON LEDGE (NON-STRATA AREA)
  - RC - REINFORCED CONCRETE LEDGE (NON-STRATA AREA)
  - RL - RAILING (NON STRATA AREA)

- AIRCON CONDENSER
- SERVICES VOID SPACE (NON-STRATA AREA)
- RAINWATER DOWNPIPE SHAFT SPACE (NON-STRATA AREA)
- WALL NOT ALLOWED TO BE HACKED OR ALTERED (INCLUDING BY WAY OF DRILLING)  
WALL THICKNESS IS 100MM-200MM (EXCLUDED FINISHES)
- NON - STRUCTURAL WALL

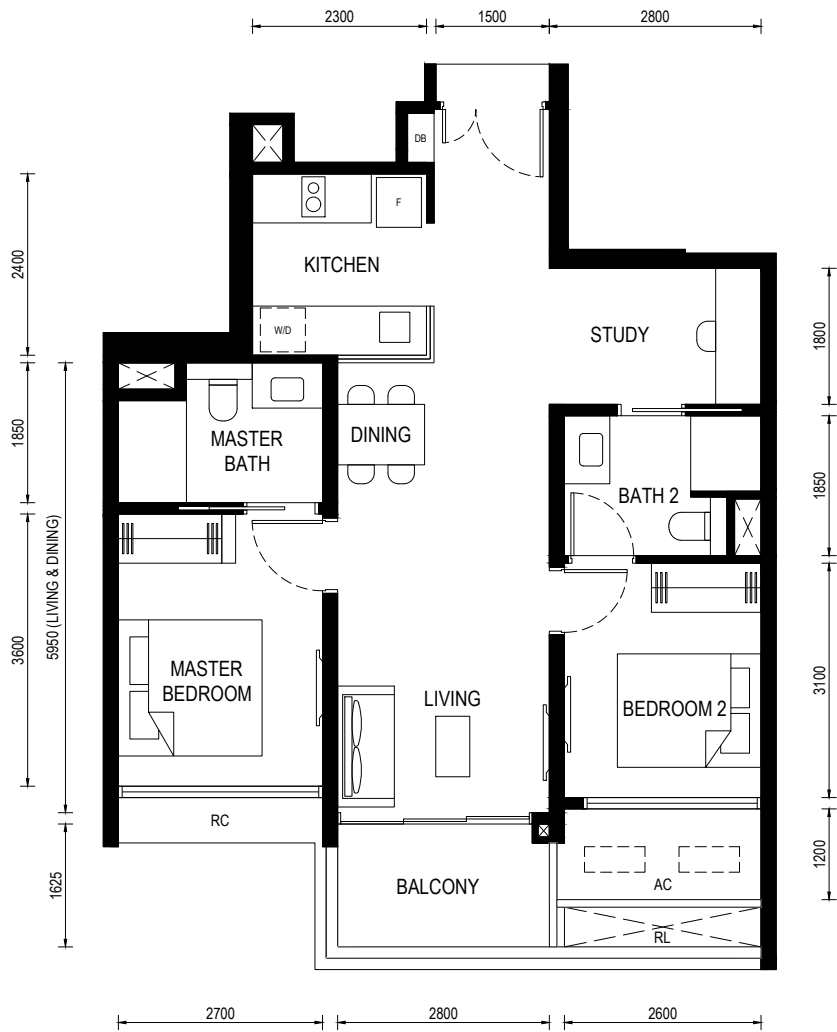


**LENTOR CENTRAL RESIDENCES**  
Floor Plan

Type (2)e

Unit: #02-04 to #13-04  
#15-04 to #28-04

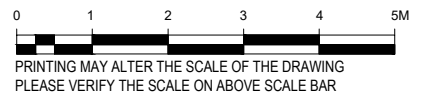
BP No.:  
A1716-00022-2023-BP01 approved on 13 OCT 2024



**LEGEND:**

- F - FRIDGE
- DB - DISTRIBUTION BOARD
- WD - WASHER CUM DRYER
- AC - AIRCON LEDGE (NON-STRATA AREA)
- RC - REINFORCED CONCRETE LEDGE (NON-STRATA AREA)
- RL - RAILING (NON STRATA AREA)

- AIRCON CONDENSER
- SERVICES VOID SPACE (NON-STRATA AREA)
- RAINWATER DOWNPIPE SHAFT SPACE (NON-STRATA AREA)
- WALL NOT ALLOWED TO BE HACKED OR ALTERED (INCLUDING BY WAY OF DRILLING)  
WALL THICKNESS IS 100MM-200MM (EXCLUDED FINISHES)
- NON - STRUCTURAL WALL

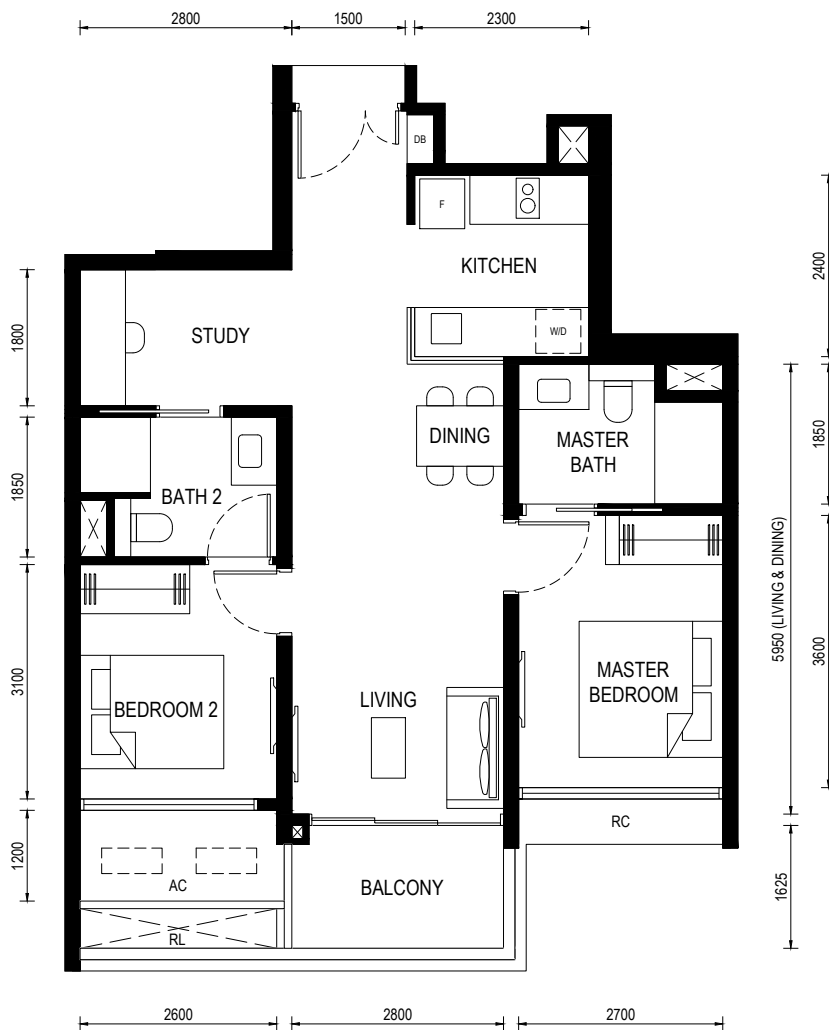


**LENTOR CENTRAL RESIDENCES**  
Floor Plan

Type (2)e

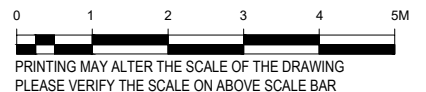
Unit: #02-15 to #13-15  
#15-15 to #27-15

BP No.:  
A1716-00022-2023-BP01 approved on 13 OCT 2024



**LEGEND:**

- F - FRIDGE
- DB - DISTRIBUTION BOARD
- W/D - WASHER CUM DRYER
- AC - AIRCON LEDGE (NON-STRATA AREA)
- RC - REINFORCED CONCRETE LEDGE (NON-STRATA AREA)
- RL - RAILING (NON STRATA AREA)
- AIRCON CONDENSER
- SERVICES VOID SPACE (NON-STRATA AREA)
- RAINWATER DOWNPIPE SHAFT SPACE (NON-STRATA AREA)
- WALL NOT ALLOWED TO BE HACKED OR ALTERED (INCLUDING BY WAY OF DRILLING)  
WALL THICKNESS IS 100MM-200MM (EXCLUDED FINISHES)
- NON - STRUCTURAL WALL

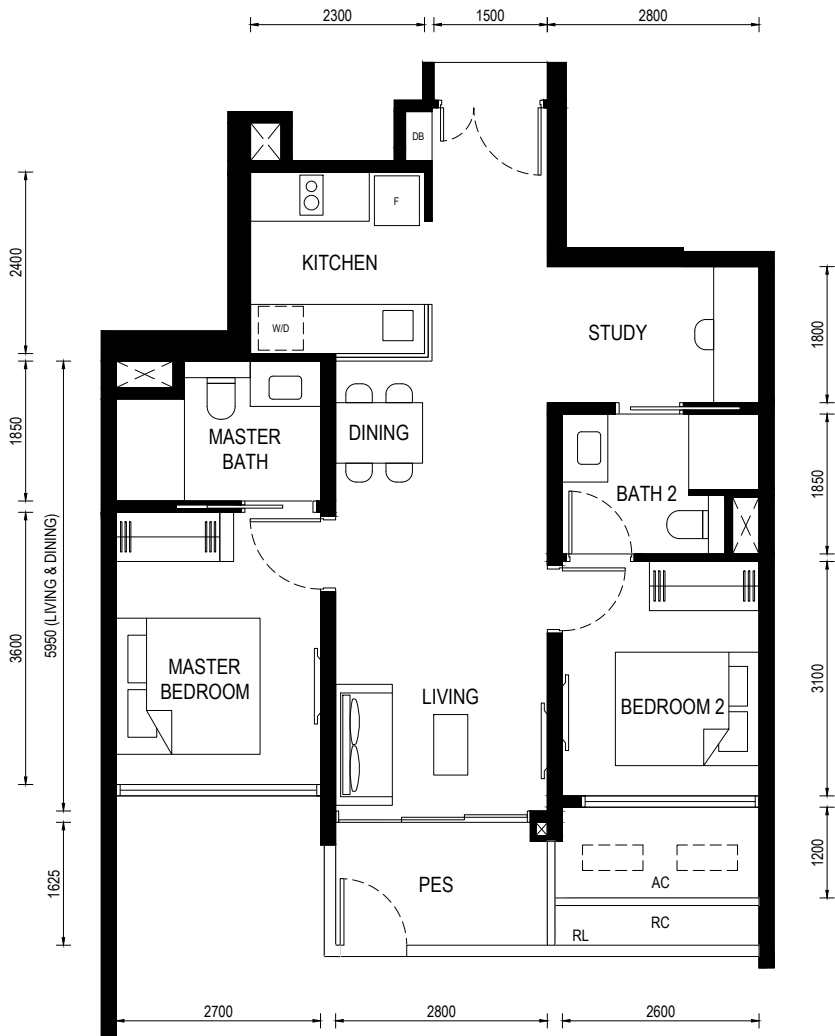


**LENTOR CENTRAL RESIDENCES**  
Floor Plan

Type (2)e1

Unit: #01-04

BP No.:  
A1716-00022-2023-BP01 approved on 13 OCT 2024



**LEGEND:**

- F - FRIDGE
- DB - DISTRIBUTION BOARD
- W/D - WASHER CUM DRYER
- AC - AIRCON LEDGE (NON-STRATA AREA)
- RC - REINFORCED CONCRETE LEDGE (NON-STRATA AREA)
- RL - RAILING (NON STRATA AREA)
- PES - PRIVATE ENCLOSED SPACE

- AIRCON CONDENSER
- SERVICES VOID SPACE (NON-STRATA AREA)
- RAINWATER DOWNPIPE SHAFT SPACE (NON-STRATA AREA)
- WALL NOT ALLOWED TO BE HACKED OR ALTERED (INCLUDING BY WAY OF DRILLING)  
WALL THICKNESS IS 100MM-200MM (EXCLUDED FINISHES)
- NON - STRUCTURAL WALL



PRINTING MAY ALTER THE SCALE OF THE DRAWING  
PLEASE VERIFY THE SCALE ON ABOVE SCALE BAR

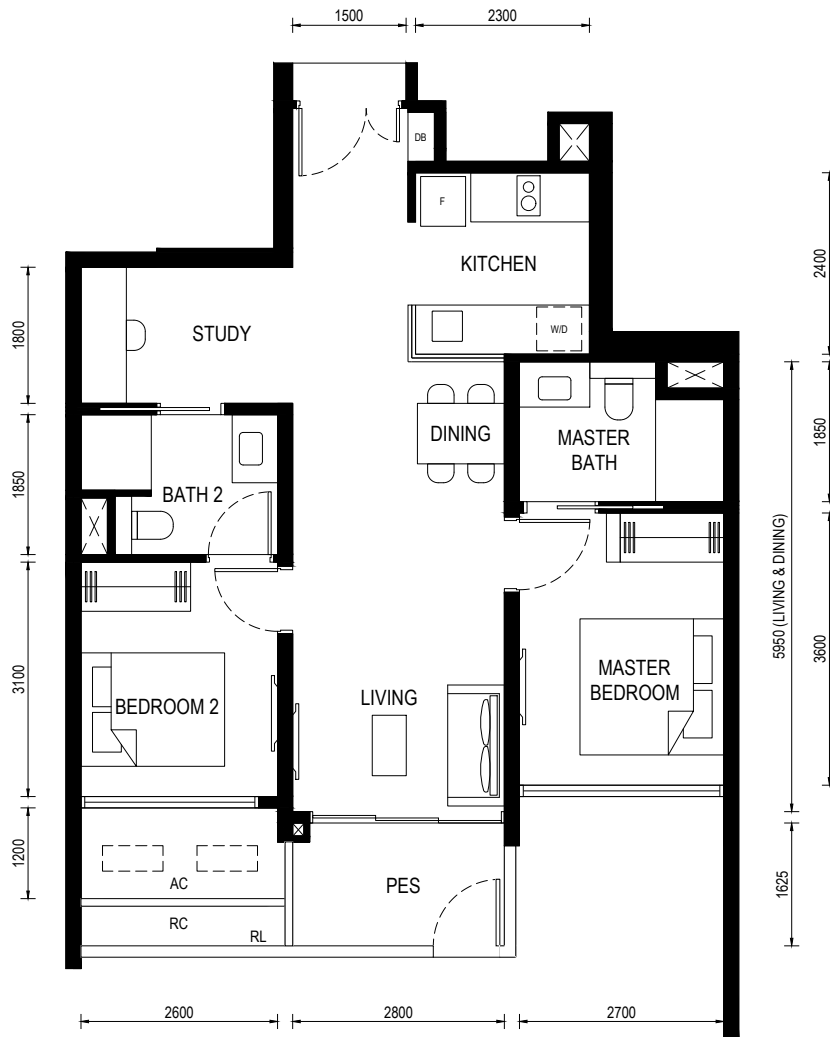


**LENTOR CENTRAL RESIDENCES**  
Floor Plan

Type (2)e1

Unit: #01-15

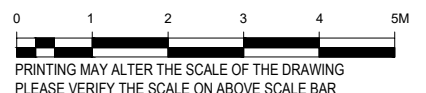
BP No.:  
A1716-00022-2023-BP01 approved on 13 OCT 2024



**LEGEND:**

- F - FRIDGE
- DB - DISTRIBUTION BOARD
- W/D - WASHER CUM DRYER
- AC - AIRCON LEDGE (NON-STRATA AREA)
- RC - REINFORCED CONCRETE LEDGE (NON-STRATA AREA)
- RL - RAILING (NON STRATA AREA)
- PES - PRIVATE ENCLOSED SPACE

- AIRCON CONDENSER
- SERVICES VOID SPACE (NON-STRATA AREA)
- RAINWATER DOWNPIPE SHAFT SPACE (NON-STRATA AREA)
- WALL NOT ALLOWED TO BE HACKED OR ALTERED (INCLUDING BY WAY OF DRILLING)  
WALL THICKNESS IS 100MM-200MM (EXCLUDED FINISHES)
- NON - STRUCTURAL WALL



**LENTOR CENTRAL RESIDENCES**  
Floor Plan

Type (2)f

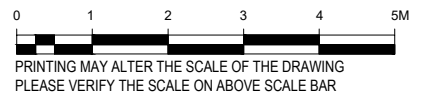
Unit: #02-09 to #13-09  
#15-09 to #28-09

BP No.:  
A1716-00022-2023-BP01 approved on 13 OCT 2024



- LEGEND:**
- F - FRIDGE
  - DB - DISTRIBUTION BOARD
  - W/D - WASHER CUM DRYER
  - AC - AIRCON LEDGE (NON-STRATA AREA)
  - RC - REINFORCED CONCRETE LEDGE (NON-STRATA AREA)

- AIRCON CONDENSER
- SERVICES VOID SPACE (NON-STRATA AREA)
- RAINWATER DOWNPIPE SHAFT SPACE (NON-STRATA AREA)
- WALL NOT ALLOWED TO BE HACKED OR ALTERED (INCLUDING BY WAY OF DRILLING)  
WALL THICKNESS IS 100MM-200MM (EXCLUDED FINISHES)
- NON - STRUCTURAL WALL

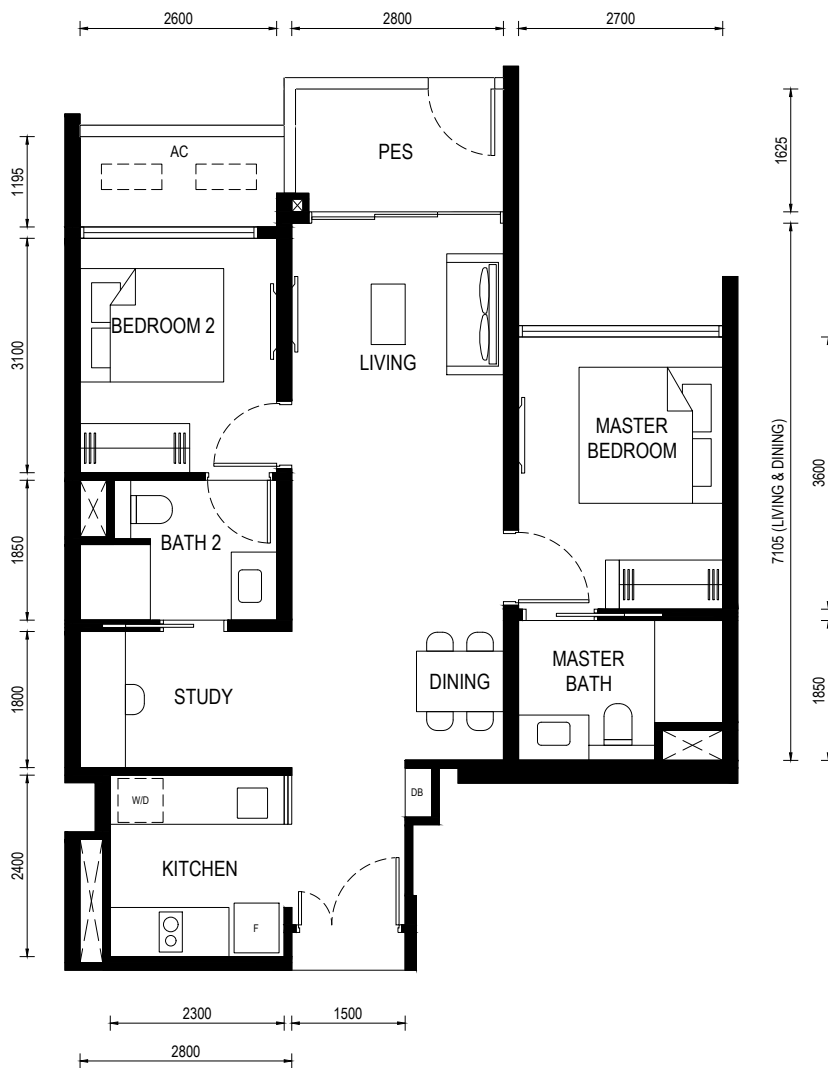


**LENTOR CENTRAL RESIDENCES**  
Floor Plan

Type (2)f1

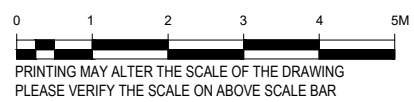
Unit: #01-09

BP No.:  
A1716-00022-2023-BP01 approved on 13 OCT 2024



- LEGEND:**
- F - FRIDGE
  - DB - DISTRIBUTION BOARD
  - WD - WASHER CUM DRYER
  - AC - AIRCON LEDGE (NON-STRATA AREA)
  - PES - PRIVATE ENCLOSED SPACE

- AIRCON CONDENSER
- SERVICES VOID SPACE (NON-STRATA AREA)
- RAINWATER DOWNPIPE SHAFT SPACE (NON-STRATA AREA)
- WALL NOT ALLOWED TO BE HACKED OR ALTERED (INCLUDING BY WAY OF DRILLING)  
WALL THICKNESS IS 100MM-200MM (EXCLUDED FINISHES)
- NON - STRUCTURAL WALL



**LENTOR CENTRAL RESIDENCES**  
Floor Plan

Type (2)g

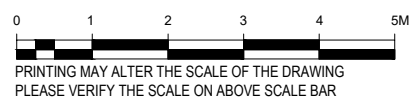
Unit: #02-05

BP No.:  
A1716-00022-2023-BP01 approved on 13 OCT 2024



- LEGEND:**
- F - FRIDGE
  - DB - DISTRIBUTION BOARD
  - W/D - WASHER CUM DRYER
  - AC - AIRCON LEDGE (NON-STRATA AREA)
  - RL - RAILING (NON STRATA AREA)

- AIRCON CONDENSER
- SERVICES VOID SPACE (NON-STRATA AREA)
- RAINWATER DOWNPIPE SHAFT SPACE (NON-STRATA AREA)
- WALL NOT ALLOWED TO BE HACKED OR ALTERED (INCLUDING BY WAY OF DRILLING)  
WALL THICKNESS IS 100MM-200MM (EXCLUDED FINISHES)
- NON - STRUCTURAL WALL



**LENTOR CENTRAL RESIDENCES**  
Floor Plan

Type (2)g

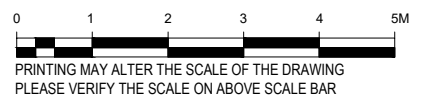
Unit: #03-05 to #13-05  
#15-05 to #28-05

BP No.:  
A1716-00022-2023-BP01 approved on 13 OCT 2024



**LEGEND:**

- F - FRIDGE
- DB - DISTRIBUTION BOARD
- W/D - WASHER CUM DRYER
- AC - AIRCON LEDGE (NON-STRATA AREA)
- RC - REINFORCED CONCRETE LEDGE (NON-STRATA AREA)
- RL - RAILING (NON STRATA AREA)
- AIRCON CONDENSER
- SERVICES VOID SPACE (NON-STRATA AREA)
- RAINWATER DOWNPIPE SHAFT SPACE (NON-STRATA AREA)
- WALL NOT ALLOWED TO BE HACKED OR ALTERED (INCLUDING BY WAY OF DRILLING)  
WALL THICKNESS IS 100MM-200MM (EXCLUDED FINISHES)
- NON - STRUCTURAL WALL

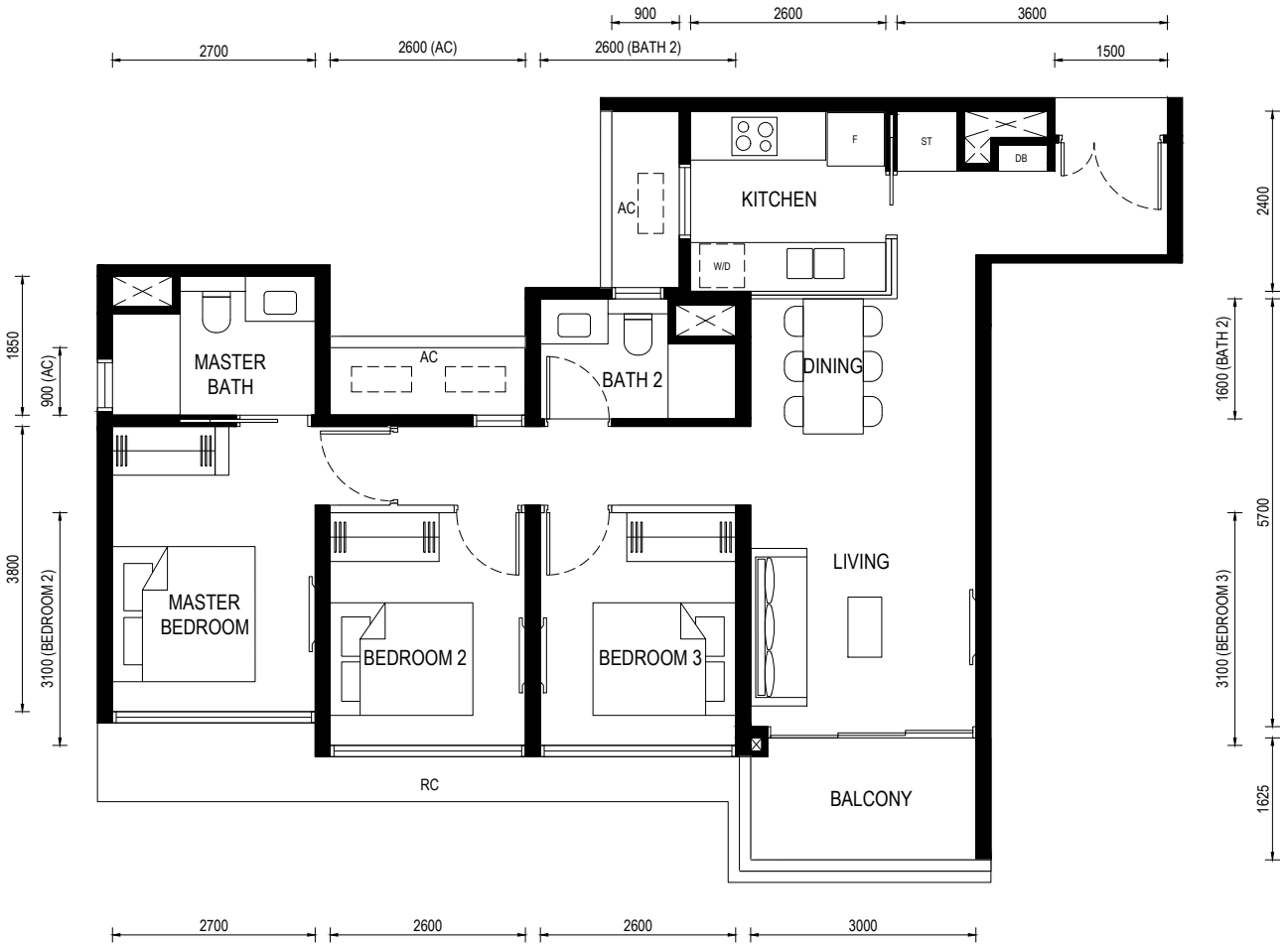


**LENTOR CENTRAL RESIDENCES**  
Floor Plan

Type (3)a

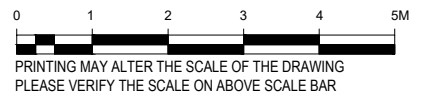
Unit: #02-07 to #13-07  
#15-07 to #28-07  
#02-12 to #13-12  
#15-12 to #27-12

BP No.:  
A1716-00022-2023-BP01 approved on 13 OCT 2024



**LEGEND:**

- F - FRIDGE
- DB - DISTRIBUTION BOARD
- W/D - WASHER CUM DRYER
- AC - AIRCON LEDGE (NON-STRATA AREA)
- RC - REINFORCED CONCRETE LEDGE (NON-STRATA AREA)
- ST - STORAGE
- AIRCON CONDENSER
- SERVICES VOID SPACE (NON-STRATA AREA)
- RAINWATER DOWNPIPE SHAFT SPACE (NON-STRATA AREA)
- WALL NOT ALLOWED TO BE HACKED OR ALTERED (INCLUDING BY WAY OF DRILLING)  
WALL THICKNESS IS 100MM-200MM (EXCLUDED FINISHES)
- NON - STRUCTURAL WALL

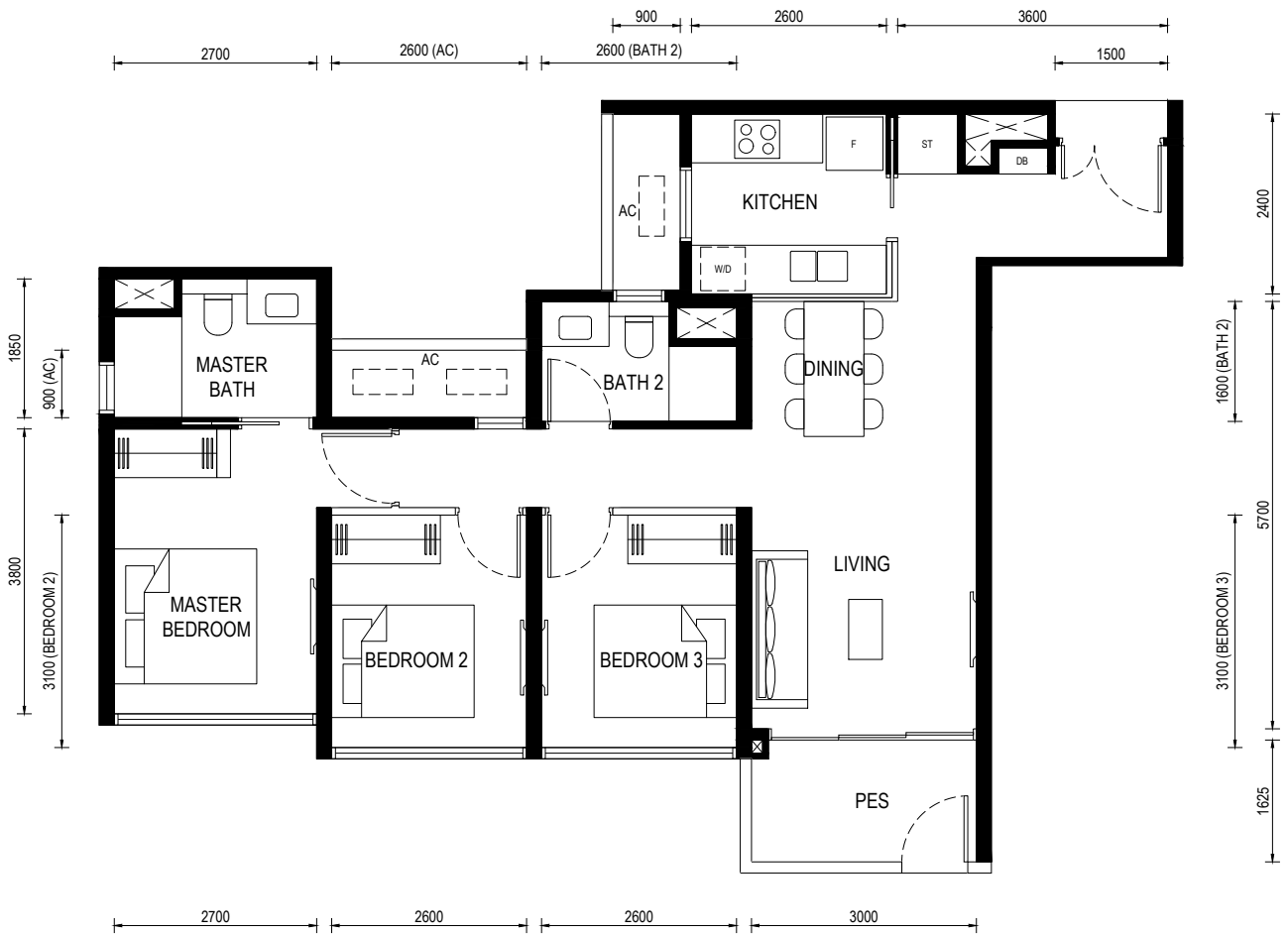


**LENTOR CENTRAL RESIDENCES**  
Floor Plan

Type (3)a1

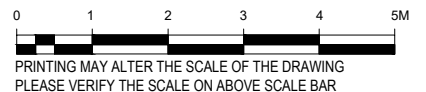
Unit: #01-07  
#01-12

BP No.:  
A1716-00022-2023-BP01 approved on 13 OCT 2024



- LEGEND:**
- F - FRIDGE
  - DB - DISTRIBUTION BOARD
  - W/D - WASHER CUM DRYER
  - AC - AIRCON LEDGE (NON-STRATA AREA)
  - PES - PRIVATE ENCLOSED SPACE
  - ST - STORAGE

- AIRCON CONDENSER
- SERVICES VOID SPACE (NON-STRATA AREA)
- RAINWATER DOWNPIPE SHAFT SPACE (NON-STRATA AREA)
- WALL NOT ALLOWED TO BE HACKED OR ALTERED (INCLUDING BY WAY OF DRILLING)  
WALL THICKNESS IS 100MM-200MM (EXCLUDED FINISHES)
- NON - STRUCTURAL WALL

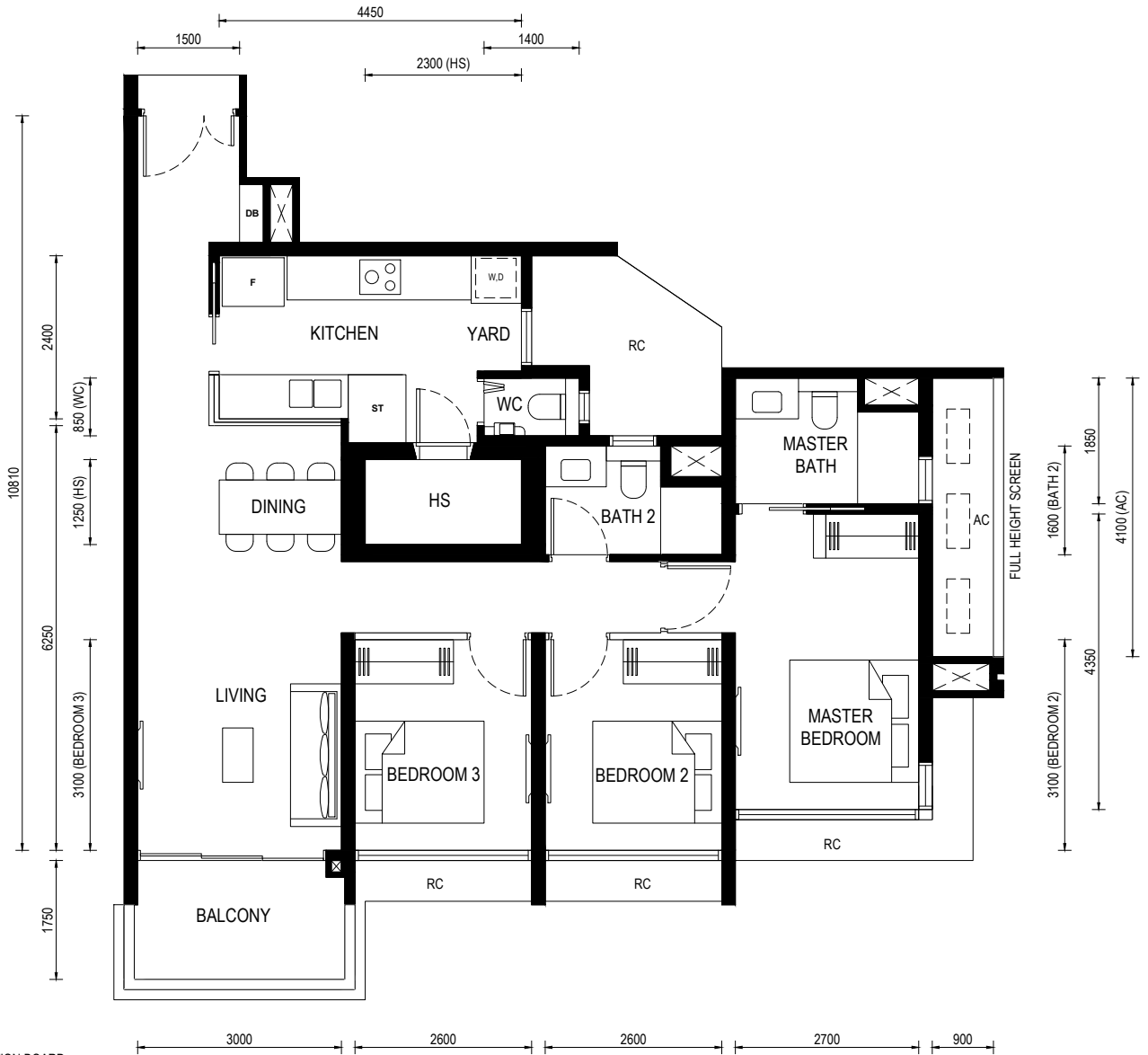


**LENTOR CENTRAL RESIDENCES**  
Floor Plan

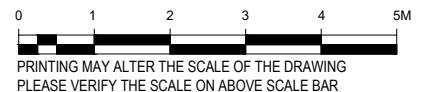
Type (3)b

Unit: #02-17 to #13-17  
#15-17 to #27-17

BP No.:  
A1716-00022-2023-BP01 approved on 13 OCT 2024



- LEGEND:**
- F - FRIDGE
  - DB - DISTRIBUTION BOARD
  - W - WASHER
  - D - DRYER
  - HS - HOUSEHOLD SHELTER
  - AC - AIRCON LEDGE (NON-STRATA AREA)
  - RC - REINFORCED CONCRETE LEDGE (NON-STRATA AREA)
  - ST - STORAGE
  - WC - WATER CLOSET
- 
- AIRCON CONDENSER
  - SERVICES VOID SPACE (NON-STRATA AREA)
  - RAINWATER DOWNPIPE SHAFT SPACE (NON-STRATA AREA)
  - WALL NOT ALLOWED TO BE HACKED OR ALTERED (INCLUDING BY WAY OF DRILLING)  
WALL THICKNESS IS 100MM-200MM (EXCLUDED FINISHES)
  - NON - STRUCTURAL WALL



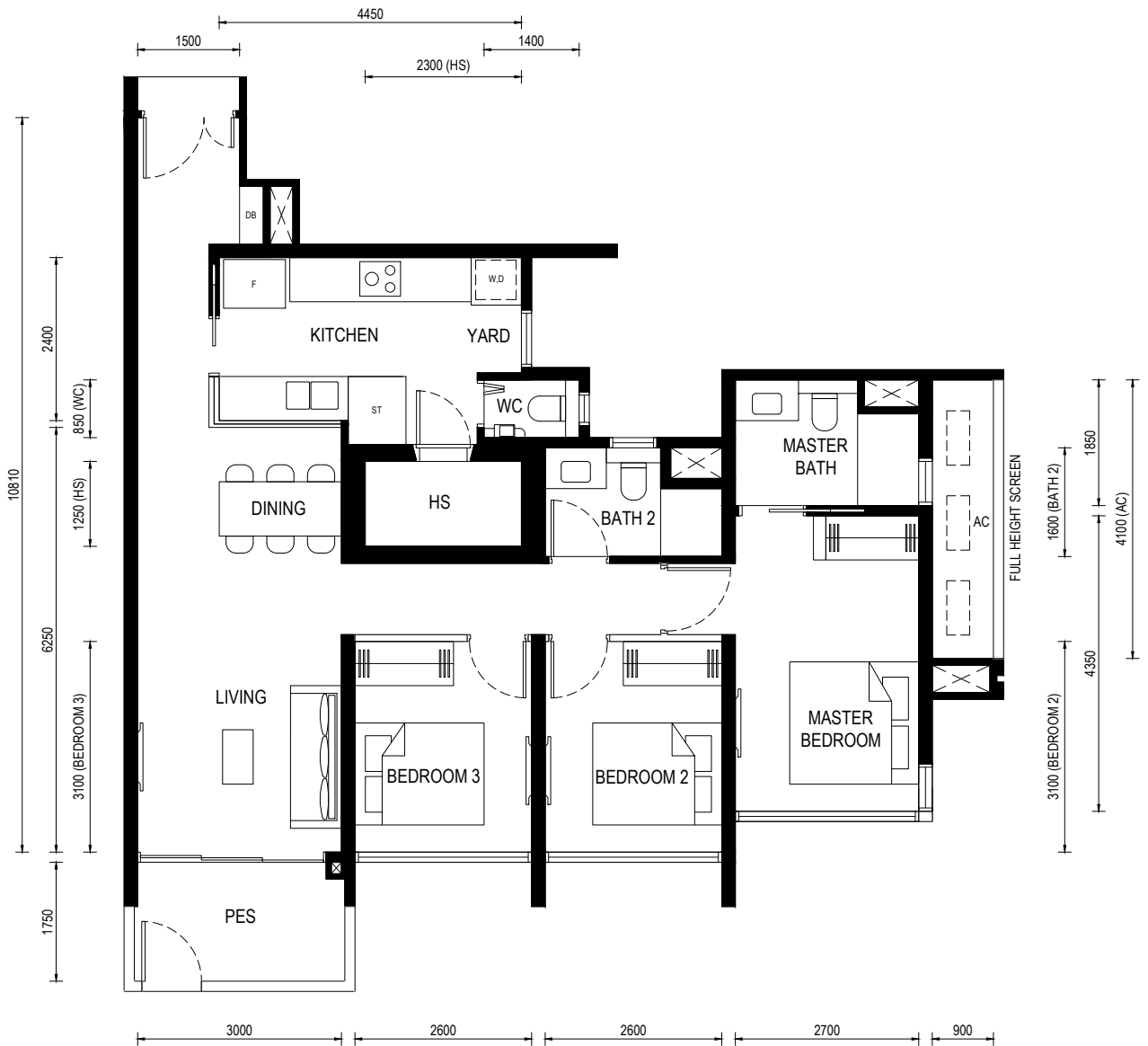


**LENTOR CENTRAL RESIDENCES**  
Floor Plan

Type (3)b1

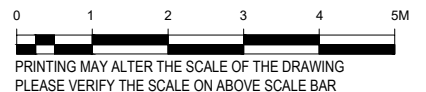
Unit: #01-17

BP No.:  
A1716-00022-2023-BP01 approved on 13 OCT 2024



- LEGEND:**
- F - FRIDGE
  - DB - DISTRIBUTION BOARD
  - W - WASHER
  - D - DRYER
  - AC - AIRCON LEDGE (NON-STRATA AREA)
  - HS - HOUSEHOLD SHELTER
  - PES - PRIVATE ENCLOSED SPACE
  - ST - STORAGE
  - WC - WATER CLOSET

- AIRCON CONDENSER
- SERVICES VOID SPACE (NON-STRATA AREA)
- RAINWATER DOWNPIPE SHAFT SPACE (NON-STRATA AREA)
- WALL NOT ALLOWED TO BE HACKED OR ALTERED (INCLUDING BY WAY OF DRILLING)  
WALL THICKNESS IS 100MM-200MM (EXCLUDED FINISHES)
- NON - STRUCTURAL WALL

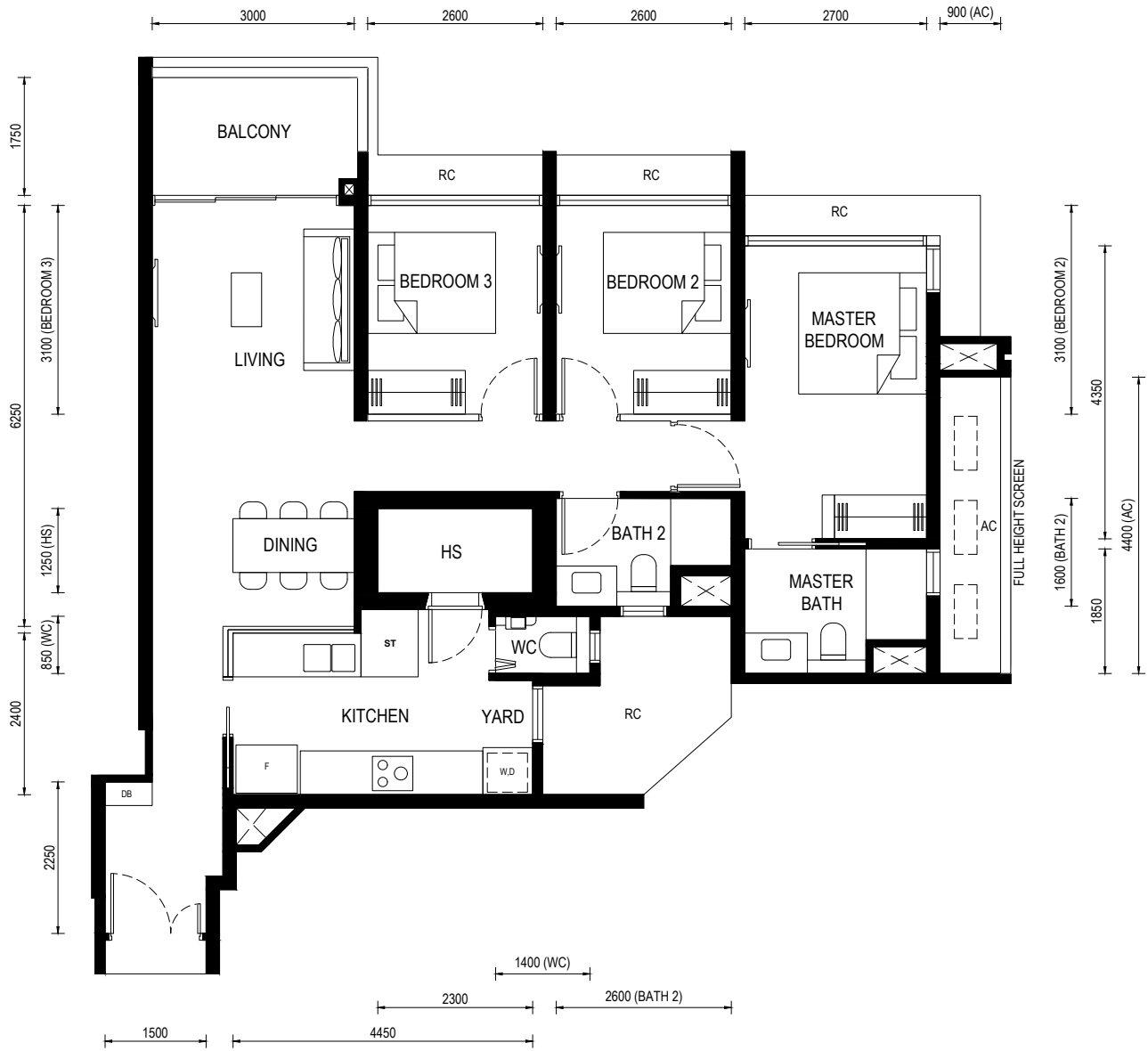


**LENTOR CENTRAL RESIDENCES**  
Floor Plan

Type (3)c

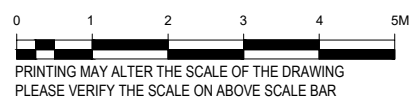
Unit: #02-02 to #13-02  
#15-02 to #28-02

BP No.:  
A1716-00022-2023-BP01 approved on 13 OCT 2024



- LEGEND:**
- F - FRIDGE
  - DB - DISTRIBUTION BOARD
  - W - WASHER
  - D - DRYER
  - HS - HOUSEHOLD SHELTER
  - AC - AIRCON LEDGE (NON-STRATA AREA)
  - RC - REINFORCED CONCRETE LEDGE (NON-STRATA AREA)
  - ST - STORAGE
  - WC - WATER CLOSET

- AIRCON CONDENSER
- SERVICES VOID SPACE (NON-STRATA AREA)
- RAINWATER DOWNPIPE SHAFT SPACE (NON-STRATA AREA)
- WALL NOT ALLOWED TO BE HACKED OR ALTERED (INCLUDING BY WAY OF DRILLING)  
WALL THICKNESS IS 100MM-200MM (EXCLUDED FINISHES)
- NON - STRUCTURAL WALL

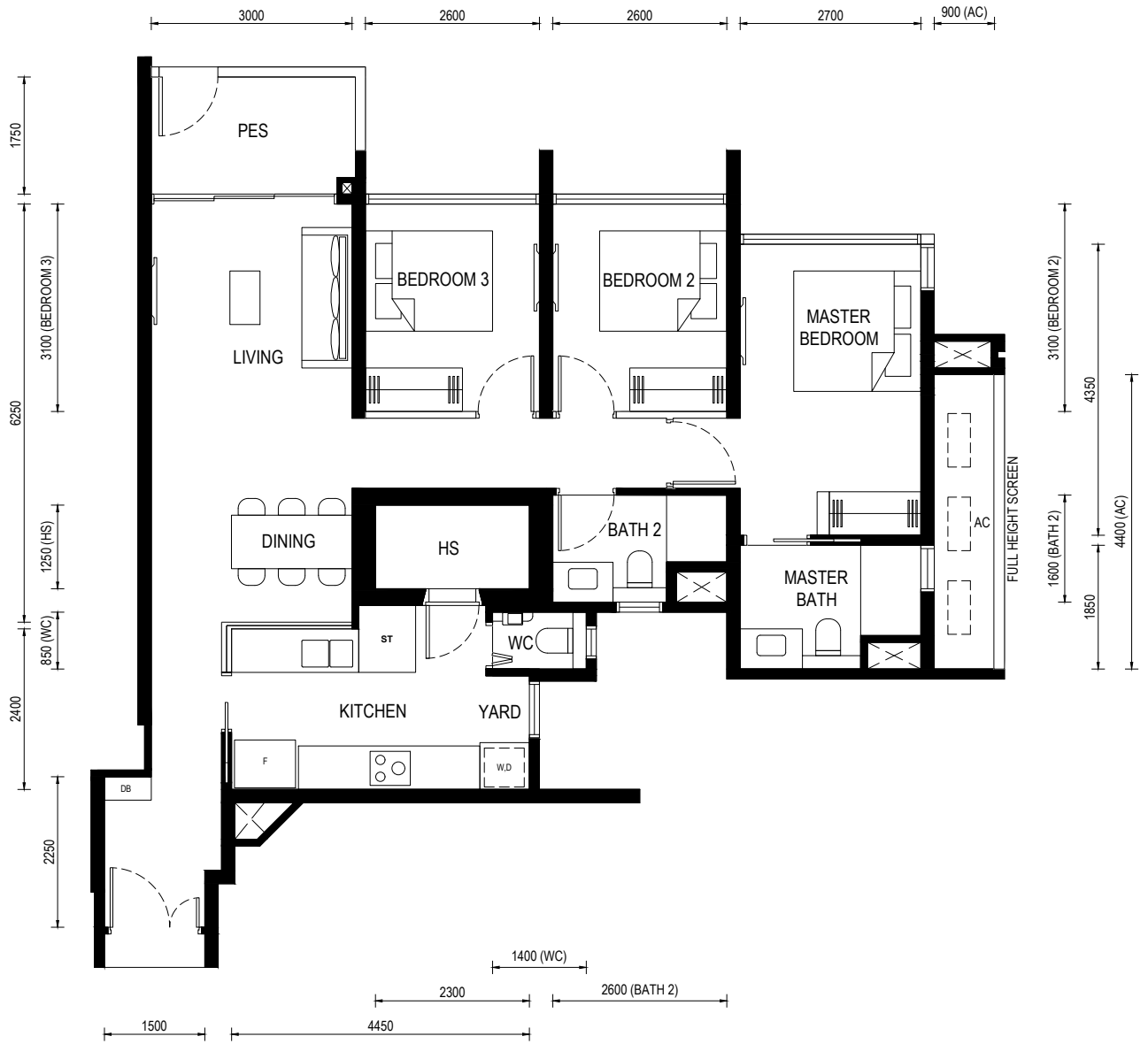


**LENTOR CENTRAL RESIDENCES**  
Floor Plan

Type (3)c1

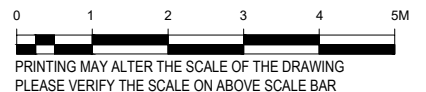
Unit: #01-02

BP No.:  
A1716-00022-2023-BP01 approved on 13 OCT 2024



- LEGEND:**
- F - FRIDGE
  - DB - DISTRIBUTION BOARD
  - W - WASHER
  - D - DRYER
  - AC - AIRCON LEDGE (NON-STRATA AREA)
  - HS - HOUSEHOLD SHELTER
  - PES - PRIVATE ENCLOSED SPACE
  - ST - STORAGE
  - WC - WATER CLOSET

- AIRCON CONDENSER
- SERVICES VOID SPACE (NON-STRATA AREA)
- RAINWATER DOWNPIPE SHAFT SPACE (NON-STRATA AREA)
- WALL NOT ALLOWED TO BE HACKED OR ALTERED (INCLUDING BY WAY OF DRILLING)  
WALL THICKNESS IS 100MM-200MM (EXCLUDED FINISHES)
- NON - STRUCTURAL WALL



**LENTOR CENTRAL RESIDENCES**  
Floor Plan

Type (4)a

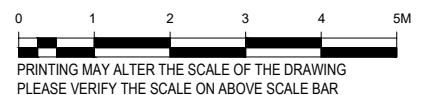
Unit: #02-13 to #13-13  
#15-13 to #27-13

BP No.:  
A1716-00022-2023-BP01 approved on 13 OCT 2024



**LEGEND:**

- F - FRIDGE
- DB - DISTRIBUTION BOARD
- W - WASHER
- D - DRYER
- HS - HOUSEHOLD SHELTER
- AC - AIRCON LEDGE (NON-STRATA AREA)
- RC - REINFORCED CONCRETE LEDGE (NON-STRATA AREA)
- ST - STORAGE
- WC - WATER CLOSET
- AIRCON CONDENSER
- SERVICES VOID SPACE (NON-STRATA AREA)
- RAINWATER DOWNPIPE SHAFT SPACE (NON-STRATA AREA)
- WALL NOT ALLOWED TO BE HACKED OR ALTERED (INCLUDING BY WAY OF DRILLING)  
WALL THICKNESS IS 100MM-200MM (EXCLUDED FINISHES)
- NON - STRUCTURAL WALL



**LENTOR CENTRAL RESIDENCES**  
Floor Plan

Type (4)a1

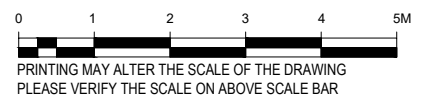
Unit: #01-13

BP No.:  
A1716-00022-2023-BP01 approved on 13 OCT 2024



- LEGEND:**
- F - FRIDGE
  - DB - DISTRIBUTION BOARD
  - W - WASHER
  - D - DRYER
  - AC - AIRCON LEDGE (NON-STRATA AREA)
  - HS - HOUSEHOLD SHELTER
  - PES - PRIVATE ENCLOSED SPACE
  - ST - STORAGE
  - WC - WATER CLOSET

- AIRCON CONDENSER
- SERVICES VOID SPACE (NON-STRATA AREA)
- RAINWATER DOWNPIPE SHAFT SPACE (NON-STRATA AREA)
- WALL NOT ALLOWED TO BE HACKED OR ALTERED (INCLUDING BY WAY OF DRILLING)  
WALL THICKNESS IS 100MM-200MM (EXCLUDED FINISHES)
- NON - STRUCTURAL WALL



**LENTOR CENTRAL RESIDENCES**  
Floor Plan

Type (4)b

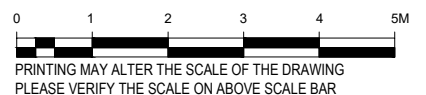
Unit: #02-08 to #13-08  
#15-08 to #28-08

BP No.:  
A1716-00022-2023-BP01 approved on 13 OCT 2024



**LEGEND:**

- F - FRIDGE
- DB - DISTRIBUTION BOARD
- W - WASHER
- D - DRYER
- HS - HOUSEHOLD SHELTER
- AC - AIRCON LEDGE (NON-STRATA AREA)
- RC - REINFORCED CONCRETE LEDGE (NON-STRATA AREA)
- ST - STORAGE
- WC - WATER CLOSET
- AIRCON CONDENSER
- SERVICES VOID SPACE (NON-STRATA AREA)
- RAINWATER DOWNPIPE SHAFT SPACE (NON-STRATA AREA)
- WALL NOT ALLOWED TO BE HACKED OR ALTERED (INCLUDING BY WAY OF DRILLING)  
WALL THICKNESS IS 100MM-200MM (EXCLUDED FINISHES)
- NON - STRUCTURAL WALL



**LENTOR CENTRAL RESIDENCES**  
Floor Plan

Type (4)b1

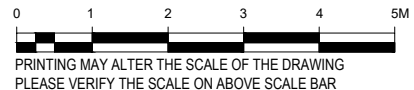
Unit: #01-08

BP No.:  
A1716-00022-2023-BP01 approved on 13 OCT 2024



- LEGEND:**
- F - FRIDGE
  - DB - DISTRIBUTION BOARD
  - W - WASHER
  - D - DRYER
  - AC - AIRCON LEDGE (NON-STRATA AREA)
  - HS - HOUSEHOLD SHELTER
  - PES - PRIVATE ENCLOSED SPACE
  - ST - STORAGE
  - WC - WATER CLOSET

- AIRCON CONDENSER
- SERVICES VOID SPACE (NON-STRATA AREA)
- RAINWATER DOWNPIPE SHAFT SPACE (NON-STRATA AREA)
- WALL NOT ALLOWED TO BE HACKED OR ALTERED (INCLUDING BY WAY OF DRILLING)  
WALL THICKNESS IS 100MM-200MM (EXCLUDED FINISHES)
- NON - STRUCTURAL WALL



PRINTING MAY ALTER THE SCALE OF THE DRAWING  
PLEASE VERIFY THE SCALE ON ABOVE SCALE BAR

**LENTOR CENTRAL RESIDENCES**  
Floor Plan

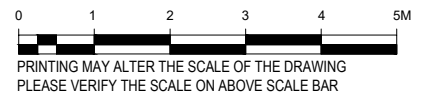
Type (4)c

Unit: #02-03 to #13-03  
#15-03 to #28-03

BP No.:  
A1716-00022-2023-BP01 approved on 13 OCT 2024



- LEGEND:**
- F - FRIDGE
  - DB - DISTRIBUTION BOARD
  - W - WASHER
  - D - DRYER
  - HS - HOUSEHOLD SHELTER
  - AC - AIRCON LEDGE (NON-STRATA AREA)
  - RC - REINFORCED CONCRETE LEDGE (NON-STRATA AREA)
  - ST - STORAGE
  - WC - WATER CLOSET
  - AIRCON CONDENSER
  - SERVICES VOID SPACE (NON-STRATA AREA)
  - RAINWATER DOWNPIPE SHAFT SPACE (NON-STRATA AREA)
  - WALL NOT ALLOWED TO BE HACKED OR ALTERED (INCLUDING BY WAY OF DRILLING)  
WALL THICKNESS IS 100MM-200MM (EXCLUDED FINISHES)
  - NON - STRUCTURAL WALL





**LENTOR CENTRAL RESIDENCES**  
Floor Plan

Type (4)c

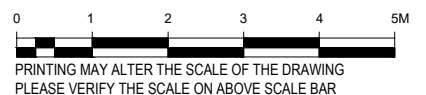
Unit: #02-16 to #13-16  
#15-16 to #27-16

BP No.:  
A1716-00022-2023-BP01 approved on 13 OCT 2024



**LEGEND:**

- F - FRIDGE
- DB - DISTRIBUTION BOARD
- W - WASHER
- D - DRYER
- HS - HOUSEHOLD SHELTER
- AC - AIRCON LEDGE (NON-STRATA AREA)
- RC - REINFORCED CONCRETE LEDGE (NON-STRATA AREA)
- ST - STORAGE
- WC - WATER CLOSET
- AIRCON CONDENSER
- SERVICES VOID SPACE (NON-STRATA AREA)
- RAINWATER DOWNPIPE SHAFT SPACE (NON-STRATA AREA)
- WALL NOT ALLOWED TO BE HACKED OR ALTERED (INCLUDING BY WAY OF DRILLING)  
WALL THICKNESS IS 100MM-200MM (EXCLUDED FINISHES)
- NON - STRUCTURAL WALL



**LENTOR CENTRAL RESIDENCES**  
Floor Plan

Type (4)c1

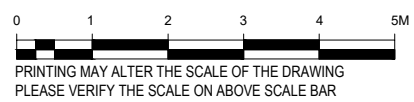
Unit: #01-03

BP No.:  
A1716-00022-2023-BP01 approved on 13 OCT 2024



- LEGEND:**
- F - FRIDGE
  - DB - DISTRIBUTION BOARD
  - W - WASHER
  - D - DRYER
  - AC - AIRCON LEDGE (NON-STRATA AREA)
  - HS - HOUSEHOLD SHELTER
  - PES - PRIVATE ENCLOSED SPACE
  - ST - STORAGE
  - WC - WATER CLOSET

- AIRCON CONDENSER
- SERVICES VOID SPACE (NON-STRATA AREA)
- RAINWATER DOWNPIPE SHAFT SPACE (NON-STRATA AREA)
- WALL NOT ALLOWED TO BE HACKED OR ALTERED (INCLUDING BY WAY OF DRILLING)  
WALL THICKNESS IS 100MM-200MM (EXCLUDED FINISHES)
- NON - STRUCTURAL WALL



**LENTOR CENTRAL RESIDENCES**  
Floor Plan

Type (4)c1

Unit: #01-16

BP No.:  
A1716-00022-2023-BP01 approved on 13 OCT 2024



- LEGEND:**
- F - FRIDGE
  - DB - DISTRIBUTION BOARD
  - W - WASHER
  - D - DRYER
  - AC - AIRCON LEDGE (NON-STRATA AREA)
  - HS - HOUSEHOLD SHELTER
  - PES - PRIVATE ENCLOSED SPACE
  - ST - STORAGE
  - WC - WATER CLOSET

- AIRCON CONDENSER
- SERVICES VOID SPACE (NON-STRATA AREA)
- RAINWATER DOWNPIPE SHAFT SPACE (NON-STRATA AREA)
- WALL NOT ALLOWED TO BE HACKED OR ALTERED (INCLUDING BY WAY OF DRILLING)  
WALL THICKNESS IS 100MM-200MM (EXCLUDED FINISHES)
- NON - STRUCTURAL WALL

